

PICKUPS



Output mV  
Treble  
Medium  
Bass  
Resistance K Ω



+5.6

**Humbucker Vintage Output (no extra on black, cream, black & cream)**

DP190+	Air Classic™ Neck	206	5.5	4.5	6.0	8.34	Will offer you an unequalled ability to create your own sound	100.00
DP191+	Air Classic™ Bridge	226	5.5	4.5	5.5	8.62	Best sonic qualities of vintage hum. without technical prob.	100.00
DMDP103+	PAF® 36th Anniversary	250	5.5	6.0	5.5	7.31	The ultimate Vintage type Pickup	105.00
DMDP223+	PAF® 36th Anniversary Bridge	285	5.0	6.5	6.0	8.60	The ultimate Vintage type Pickup	105.00
DMDP260+	PAF® Master Neck	193	5.5	5.5	4.5	7.37	Quiet, bright, and very dynamic. Vintage got better	105.00
DMDP261+	PAF® Master Bridge	278	5.0	6.0	5.0	7.69	Has all that combined with real rock and roll character	105.00
DMDP163+	Bluesbucker®	224	6.0	5.5	4.5	10.07	Sounds like a P90. Splitting will give you a Strat PU sound	110.00
DMDP211+	EJ Custom™ Neck Eric Johnson	178	9.0	4.5	5.0	7.01	Designed to sound like old Gretsch® country gentleman	110.00
DMDP212+	EJ Custom™ Bridge Eric Johnson	200	8.5	4.5	5.5	7.85	Designed to sound like old Gretsch® country gentleman	110.00
DMDP156+	The Humbucker From Hel®	226	8.5	4.5	4.5	5.89	Open the sound in neck nos. Of a Gibson® Les Paul®	100.00



**Humbucker Medium Output (no extra on black, cream, black & cream)**

DMDP193+	Air Norton™	270	5.0	7.0	6.5	12.58	The tone is deep and warm, but not muddy	100.00
DMDP192+	Air Zone™	323	5.0	8.5	8.5	17.49	Vintage version of the Tone zone. All around	100.00
DMDP224+	DiMarzio AT-1™ Andy Timmons	320	5.5	8.0	8.0	16.50	Balance, warmth, and clarity. Focus is Rock	110.00
DMDP165+	The Breed™ Neck Steve Vai	325	6.5	7.5	7.5	10.39	Fat, classic humbucker sound. Coil Split	110.00
DMDP221+	D Activator-X™ Neck	300	4.5	5.5	6.5	11.29	Powerful sound wide open with clean sound when vol.down	100.00
DMDP244+	Dominion™ Neck Mark Morton	290	6.0	6.0	5.0	8.39	Mark Morton Lamb of God design	110.00
DMDP158+	Evolution® Neck Steve Vai	294	6.5	6.0	6.0	13.04	Designed for maximum impact and power	115.00
DMDP153+	FRED®	305	5.5	6.0	5.0	10.38	Bumped mid-range of the PAF Pro with more crank and growl	110.00
DMDP252+	Gravity Storm™ Neck Steve Vai	290	5.0	6.0	6.0	12.56	Sweet and warm, but the texture has an edge to it	115.00
DMDP256+	Illuminator™ Neck John Petrucci	295	5.0	7.0	6.0	10.50	Versatility ! To be able to span a multitude of different sounds	130.00
DMDP227+	LiquiFire™ John Petrucci	300	4.5	7.5	6.0	10.75	Neck pickup with a flowing, singing solo tone	110.00
DMDP216+	Mo' Joe™ Joe Satriani	320	5.0	5.5	5.0	9.76	Mo' Joe™ is all about tone and definition.	110.00
DMDP160+	Norton®	352	5.0	7.0	6.5	12.62	Might be the most versatile bridge Pickup.	100.00
DMDP213+	PAF Joe™ Joe Satriani	272	6.5	5.0	4.5	8.26	Combine the best of PAF Pro with late 50s Gibson Humb.	110.00
DMDP151+	PAF Pro®	300	6.0	5.0	5.0	8.40		110.00
DMDP205+	Steve Morse Model™ Neck	250	4.0	6.0	5.0	21.00	Dark,smooth sound that is clean and uncompressed	110.00
DMDP258+	Titan™ Neck Jack Bowen	280	5.5	6.0	5.5	10.37	Punchy and fat sounding	120.00
DMDP254+	Transition™ Neck Steve Lukather	258	5.5	5.5	6.0	10.23	Are both subtle and tough, with power and depth	115.00

**Humbucker High Output (no extra on black, cream, black & cream)**

DMDP166+	The Breed™ Bridge Steve Vai	356	6.5	9.0	8.0	16.32	Fat, classic humbucker sound. Coil Split	110.00
DMDP228+	Crunch Lab™ John Petrucci	410	4.5	5.5	6.0	11.03	Crunchy with big tight sound	120.00
DMDP220+	D Activator™ Bridge	470	6.5	6.0	6.0	11.41	Passive pickup with Active edgy sound	100.00
DMDP219+	D Activator™ Neck	385	8.0	5.0	4.0	7.22	Big, bright and open sounding with enriched harmonic	100.00
DMDP222+	D Activator-X™ Bridge	500	4.0	6.0	5.5	14.51	Powerful sound wide open with clean sound when vol. down	120.00
DMDP245+	Dominion™ Bridge Mark Morton	360	6.0	9.0	7.0	16.5	Mark Morton Lamb of God design	110.00
DMDP207+	D Sonic™	390	5.5	6.5	6.5	11.96	High Gain , Heavy chord sound. 2 single coil or parallel	130.00
DMDP101+	Dual Sound®	425	5.5	7.5	8.0	13.68	Split single/humbucker	115.00
DMDP159+	Evolution® Bridge Steve Vai	404	6.5	7.0	6.0	13.84	Fat, punchy and loud	115.00
DMDP215+	Evo 2™ Bridge Steve Vai	375	6.0	7.5	6.0	14.02	More complex than Evolution	115.00
DMDP253+	Gravity Storm™ Bridge Steve Vai	340	4.5	9.0	7.5	15.19	Steve Vai latest design with bite & sweetness	115.00
DMDP257+	Illuminator™ Bridge John Petrucci	410	5.0	5.5	5.5	10.56	Massive overdrive,very tight,rhythmical & aggressive	130.00
DMDP200+	Steve Morse Model™ Bridge	450	6.5	7.0	5.0	9.94	Delivers high output and a strong attack centered on the mids	110.00
DMDP161+	Steve's Special™ Steve Morse	390	6.5	4.5	7.5	18.21	Bass and treble freq. are boosted w. the mids are pulled back	100.00
DMDP100+	Super Distortion®	425	5.5	7.5	8.0	13.68	The best all 'round high-power pickup ever made !	110.00
DMDP104+	Super 2™	400	8.0	6.0	4.0	8.70	Higher end as S. Dist with lighter bottom	100.00
DMDP152+	Super 3™	435	5.0	8.0	6.5	25.00	More mid range as Super Distortion	110.00
DMDP155+	The Tone Zone®	375	5.0	8.5	8.5	17.31	Tremendous bass and low-mid response-reinforce the bottom	110.00
DMDP259+	Titan™ Bridge Jack Bowen	418	5.0	6.0	5.0	11.07	Tight, good dynamic	120.00
DMDP255+	Transition™ Bridge Steve Lukather	390	4.5	7.0	6.0	11.05	Subtle and tough. They have power and depth	115.00
DMDP102+	X2N®	510	6.5	6.5	5.5	15.83	In your face ! Single coil/series Parallel	120.00
DMDP240+	Vintage Minibucker™ Neck	155	6.5	4.5	4.5	6.11	Excels at clean country sound, but also shine at extreme level	110.00
DMDP241+	Vintage Minibucker™ Bridge	180	5.0	5.5	5.0	8.25	If a PAF could jump in a mini hum., that what it sounds like	110.00

Modell und Preisänderungen vorbehalten-Nous nous réservons le droit de modifier prix et modèles sans préavis.

**PICKUPS**

+5.6

Power mV  
Treble  
Medium  
Bass  
Resistance Kohm

**Standard Stratocaster®** (no extra on aged white, black & cream)

DMDP110+	FS-1™	160	7.5	6.5	6.0	14.23	Louder than stock single-coil and smoother and fatter-sound	70.00
DMDP174+	Red Velvet™	180	8.0	5.5	5.0	8.52	Strat® pickup with the punch and sings of a Tele®	80.00
DMDP111+	SDS-1™	200	5.5	6.0	7.0	9.36	Look like a Strat® pu, but adds punch, gain and warmth !	70.00
DMDP176+	True Velvet™ Bridge	142	8.0	5.0	3.5	6.49	Effective for many playing styles, from country to Texas blues.	80.00
DMDP175S+	True Velvet™ Middle	130	8.5	4.5	3.5	6.21	Produces great clarity, even with full chords	80.00
DMDP175+	True Velvet™ Neck	130	8.5	4.5	3.5	6.21	Effective for many playing styles, from country to Texas blues.	80.00



**Hum-cancelling Stratocaster®** (no extra on aged white, black & cream)

DMDP180+	Air Norton S™	280	5.0	7.0	6.5	11.21	It's warm sounding, very well balanced	100.00
DMDP415+	Area 58™	125	9.0	3.5	3.5	6.15	A great pickup that is clear and bright, 58 Strat PU at its best	100.00
DMDP416+	Area 61™	142	8.5	4.0	4.0	6.43	Capture the best qualities of PU from the 50s and early 60s	110.00
DMDP419+	Area 67™	120	9.5	4.0	3.0	5.86	Capture classic bright and clean but eliminated the hum	110.00
DMDP225+	DiMarzio BC-1™ Billy Corgan	290	4.5	6.5	7.0	11.62	Deeper sound from low strings without losing any punch	100.00
DMDP226+	DiMarzio BC-2™ Billy Corgan	315	4.0	8.0	8.5	13.47		110.00
DMDP184+	The Chopper™	260	7.0	6.0	6.0	9.16	More power concentrated in the mid+low end=bigger sound	115.00
DMDP186+	The Cruiser® Neck	140	8.0	4.5	5.0	3.13	Excellent pickup to combine with medium-output humb.	110.00
DMDP187+	The Cruiser® Bridge	143	8.0	4.5	5.5	5.75	Hotter than trad. Singlecoil, bass strings have bit more chunk	115.00
DMDP181+	Fast Track 1™	191	7.5	5.0	5.5	5.78	Highly recommended combined with med-to-hot humbuckers	130.00
DMDP182+	Fast Track 2™	321	5.0	8.0	7.5	18.07	Sound puts it right in the wide open, "everything-on-11" !	110.00
DMDP116+	HS-2™	90	7.5	5.5	5.0	14.97	Excellent PU to use with rack systems and highgain amps	100.00
DMDP117+	HS-3™	93	6.5	6.0	6.0	23.72	Weapon of choice Strat®-powered class. metal since early 80s	110.00
DMDP217+	HS-4™	93	7.0	6.0	6.0	23.50	Is the vintage magnet-stagger version of the HS-3	110.00
DMDP422+	Injector™ Neck Paul Gilbert	160	7.5	6.5	6.0	8.56	Paul Gilbert Signature mod.	110.00
DMDP423+	Injector™ Bridge Paul Gilbert	185	6.5	7.0	6.5	11.35	Paul Gilbert Signature mod.	120.00
DMDP188+	Pro Track™	275	5.5	6.5	6.5	7.70	It's warm, it's friendly, it sounds like a vintage PAF®	115.00
DMDP425+	Satch Track™ Neck Joe Satriani	245	7.0	5.5	5.5	7.02	Articulate, vocal and musical, the most advanced Fast Track	110.00
DMDP218+	Super Distortion® S	325	5.0	7.5	8.0	13.18	Performance of famous Super Distortion in a humb. Strat®	100.00
DMDP189+	The Tone Zone® S	300	4.5	8.5	8.0	12.39	Performance of famous Tone Zone in a humb. Strat®	100.00
DMDP420+	Virtual Solo™	205	5.5	7.5	6.5	11.17	High output and a full, warm sound !	115.00
DMDP408+	Virtual Vintage® 54 Pro	140	8.0	5.5	5.5	7.75	Warm, smoky sound, fattens up when you pick hard	115.00
DMDP402+	Virtual Vintage® Blues	145	7.5	5.5	5.5	8.18	Has more power and warmth than typical single-coil. Bluesy !	115.00
DMDP409+	Virtual Vintage® Heavy Blues 2	170	6.5	7.0	6.0	8.53	For players who want a very warm, round sound	115.00



**Standard Telecaster®**

DMDP112+	Pre B-1™	170	6.5	6.5	6.0	14.23	Keep basic character of Tele® bridge, but with bigger sound	80.00
DMDP177+	True Velvet™ T Neck	95	6.0	7.0	5.0	6.64	Low strings : big and clean sounds like Twang King. Highs smoother, stronger attack	80.00
DMDP178+	True Velvet™ T Bridge	215	7.5	5.0	4.0	7.41	Sizzle and warmth, sharp attack, and smooth sustain	80.00
DMDP172+	Twang King™ Neck	89	7.0	7.0	5.0	6.22	Captures the best elements of our best Broadcaster® and Tele® sounds	85.00
DMDP173+	Twang King™ Bridge	198	8.0	4.0	4.0	8.07	Captures the best elements of our best Broadcaster® and Tele® sounds	85.00

**Hum Cancelling Telecaster®**

DMDP421+	Area Hot T™ Bridge	238	6.5	6.0	6.0	9.33	Tele® bridge PU sound like the same EQ as vintage PAF®	110.00
DMDP424+	Area T™ 615	200	7.5	5.5	5.5	7.93	Tele® bridge pickups made for modern country music	110.00
DMDP417+	Area T™ Neck	95	7.0	5.5	6.0	7.83	Combination of clarity and warmth that Tele® players need	110.00
DMDP418+	Area T™ Bridge	175	7.5	6.5	6.0	7.50	The highs sing, the lows snap and the mids have unreal punch	110.00
DMDP384+	The Chopper T™ Bridge	260	7.0	6.0	6.0	9.19	Is the louder, punchier brother of the Fast Track	110.00
DMDP381+	Fast Track T™	191	8.0	5.0	5.0	5.72	Is hotter than most single-coil Tele® bridge	110.00
DMDP318+	Super Distortion® T	325	5.0	7.5	8.0	13.18	Performance of famous Super Distortion in a humb. Tele®	110.00
DMDP389+	The Tone Zone® T	300	5.0	8.5	8.0	12.39	Performance of famous Tone Zone in a humb. Tele®	110.00

**PICKUPS**



**Power mV**  
**Treble**  
**Medium**  
**Bass**  
 Resistance Kohm



+5.6

**Soapbar**

DMDP162+	DLX Plus™ Neck	380	6.5	5.0	6.0	13.80	Preserve clean+open character of original soapbar	105.00
DMDP154+	DLX Plus™ Bridge	400	6.5	4.5	7.0	17.28	The sound is more like of a modern full-size humbucker	105.00
DMDP209+	P90 Super Distortion®	400	5.0	7.5	8.0	13.50	Performance of famous Super Distortion in a P90 Cover	105.00
DMDP210+	The Tone Zone® P90	385	5.0	8.5	8.5	16.77	Performance of famous Tone Zone in a P90 Cover	105.00
DMDP167+	DiMarzio Soapbar™	270	5.5	6.0	4.5	8.60	Classic Soapbar sound + punched up mids and tighten lows	105.00
DMDP169+	Virtual P90™	280	6.0	5.5	5.0	9.14	The name says it all ! P90 Pushed at its best	110.00



**7-String and 8-String**

DMDP793+	Air Norton 7™	260	5.0	7.0	7.0	13.34	The tone is deep and warm, but not muddy	120.00
DMDP700+	Blaze™ Neck	280	5.5	4.5	6.5	15.80	Get everything from jazz sound to a wall-of-sound with heavy overdrive	120.00
DMDP701+	Blaze™ Middle	200	7.0	5.0	4.5	13.46	Is exceptionally tight, and is designed to be a match for the Blaze™ humbuckers in split mode	70.00
DMDP702+	Blaze™ Bridge	380	6.0	4.5	7.5	20.75	Handle both fast soloing and clean chords	120.00
DMDP708+	Crunch Lab 7™ John Petrucci	410	4.5	5.5	6.0	11.07	"Crunch" is what it's all about with a big, tight sound	130.00
DMDP719+	D Activator 7™ Neck	380	8.0	5.0	4.0	6.98	Active type of sound without the sterile and limited headroom	120.00
DMDP720+	D Activator 7™ Bridge	460	6.5	6.0	6.0	11.40	Active type of sound without the sterile and limited headroom	120.00
DMDP819+	D Activator 8™ Neck						Active type of sound without the sterile and limited headroom	130.00
DMDP820+	D Activator 8™ Bridge						Active type of sound without the sterile and limited headroom	130.00
DMDP706+	D Sonic 7™	390	5.5	6.0	6.5	12.03	Clarity, warm tone and high output are the qualities of this PU	140.00
DMDP704+	Evolution® 7 Steve Vai	420	6.5	7.0	6.5	14.09	Designed for maximum impact and power	120.00
DMDP756+	Illuminator 7™ Neck John Petrucci	270	5.0	7.0	6.0	10.42	Get a multitude of different sounds within one guitar	140.00
DMDP757+	Illuminator 7™ Bridge John Petrucci	410	5.0	5.5	6.0	11.17	Get a multitude of different sounds within one guitar	140.00
DMDP709+	Ionizer 7™ Neck	295	7.0	6.0	7.0	9.24	Has warm lows and clear highs+performs like classic single-coil in split mode.	130.00
DMDP711+	Ionizer 7™ Bridge	425	5.5	7.0	6.0	11.51	Powerful and focused, has both power and enough headroom	130.00
DMDP809+	Ionizer 8™ Neck						Has warm lows and clear highs+performs like classic single-coil in split mode.	140.00
DMDP810+	Ionizer 8™ Middle							80.00
DMDP811+	Ionizer 8™ Bridge						Powerful and focused, has both power and enough headroom	140.00
DMDP707+	LiquiFire 7™ John Petrucci	270	4.5	7.5	6.0	11.48	Neck pickup with a flowing, singing solo tone	120.00
DMDP759+	PAF® 7	220	5.5	4.5	6.0	7.23	A sound both clean and open on the lows and warm +rounded on th highs	120.00
DMDP859+	PAF® 8						A sound both clean and open on the lows and warm +rounded on th highs	130.00
DMDP712+	Super Distortion® 7	435	5.0	7.5	8.0	13.03	The world's most popular high-output pickup for 7 Strings G.	120.00
DMDP812+	Super Distortion® 8						The world's most popular high-output pickup for 8 Strings G.	130.00
DMDP755+	The Tone Zone® 7	385	5.0	8.5	8.0	17.86	Tremendous bass and low-mid response-reinforce the bottom	120.00
DMDP705+	X2N® 7	510	6.0	5.5	6.0	13.97	More strings, more bass response and more power !	130.00
DMDP814+	Eclipse 8™ Bridge Javier Reyes	380	5.5	5.0	6.0	8.43	Everything in one pickup, for jazz, metal, latin	140.00
DMDP813+	Eclipse 8™ Neck Javier Reyes	270	6.0	4.5	5.5	6.59	Everything in one pickup, for jazz, metal, latin	140.00

**Options**

**F-SPACING**

F F-Spacing Pickups

**Construction type :**

- Alnico 2
- Alnico 4
- Alnico 5
- Ceramic

**Custom Colors :**

**6 Strings Humbuckers Colors**

Chrome Top (12 pieces only)	+75.00
Metal cover (Matt Black, nickel silver, polished nickel, Satin nickel)	+23.00
Polished gold, satin gold or vintage worn nickel	+33.00
Vintage worn gold	+43.00
Red (R), blue (B), green(G), white (WH) (Humbucker & Strat+Tele)	+10.00
Cream (CR), Black/Cream (BC) – Humbucker	0.00

Modell und Preisänderungen vorbehalten-Nous nous réservons le droit de modifier prix et modèles sans préavis.

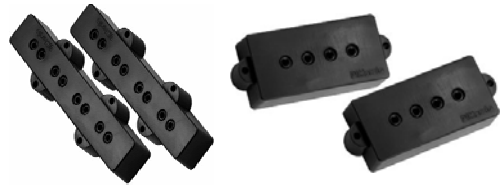


**PICKUPS**

+5.6



Power mV  
Treble  
Medium  
Bass  
Resistance Kohm



**Bass**

Model	Description	Power mV	Treble	Medium	Bass	Resistance Kohm	Notes	Price
DMDP247+	Area J™ Neck	155	6.0	5.5	5.0	7.80	They're all about warmth, sustain, and a clean, singing tone	95.00
DMDP248+	Area J™ Bridge	155	6.0	5.5	5.0	7.80	They're all about warmth, sustain, and a clean, singing tone	95.00
DMDP249+	Area J™ Pair						They're all about warmth, sustain, and a clean, singing tone	180.00
DMDP550+	Area J™ 5 Neck	150	6.0	5.5	5.5	9.32	They're all about warmth, sustain, and a clean, singing tone	110.00
DMDP551+	Area J™ 5 Bridge	150	6.0	5.5	5.5	9.56	They're all about warmth, sustain, and a clean, singing tone	110.00
DMDP552+	Area J™ 5 Pair						They're all about warmth, sustain, and a clean, singing tone	200.00
DMDP250+	Area P™							100.00
DMDP251+	Area P + J™							180.00
DMDP123S+	DiMarzio Model J™ Neck	150	4.0	5.0	6.0	6.82	Reproduce the warmth + roundness of the traditional Fender® Jazz Bass® sound with increased power and hum-cancellation.	90.00
DMDP123L	DiMarzio Model J™ Bridge	150	4.0	5.0	6.0	6.82	Same	90.00
DMDP123+	DiMarzio Model J™ Pair						Same	160.00
DMDP120+	Model One™	200	7.0	5.0	8.0	11.31	Designed as a direct replacement for Gibson® EB ser. neck pu	130.00
DMDP122+	DiMarzio Model P®	163	5.0	7.0	7.0	11.54	Reproduces sound of P bass with added gain and solid tone	95.00
DMDP126+	DiMarzio Model P+J™ Pair							160.00
DMDP127+	Split P™	250	6.0	5.0	8.0	19.16	Widen the sound of your gear with Split P	120.00
DMDP147+	Ultra Jazz™ Neck	250	6.0	5.0	7.0	12.30	Takes a trad. Fender Jazz B sound and really opens it up	85.00
DMDP148+	Ultra Jazz™ Bridge	250	6.0	5.0	7.0	12.30	Takes a trad. Fender Jazz B sound and really opens it up	85.00
DMDP149+	Ultra Jazz™ Pair						Takes a trad. Fender Jazz B sound and really opens it up	160.00
DMDP547+	Ultra Jazz™ 5 Neck	230	6.0	4.5	7.5	16.60	Takes a trad. Fender Jazz B sound and really opens it up	100.00
DMDP548+	Ultra Jazz™ 5 Bridge	230	6.0	4.5	7.5	16.90	Takes a trad. Fender Jazz B sound and really opens it up	100.00
DMDP549+	Ultra Jazz™ 5 Pair						Takes a trad. Fender Jazz B sound and really opens it up	180.00
DMDP145+	Will Power™ Neck Billy Sheehan	200	7.0	5.0	7.0	12.21	Is very deep-sounding with great low-end definition	135.00
DMDP146+	Will Power™ Middle Billy Sheehan	175	5.0	8.0	8.0	11.45	Is a P-style PU with tremendous punch and mid-range power	105.00

**ACOUSTIC**



DMDP234	The Black Angel™	NEW	Passive magnetic soundhole pickup. No battery needed	230.00
DMDP130	Acoustic Model™		Piezo that can be mounted in any location on the guitar's top	70.00
DMDP230	The Angel™		Track your right- and left-hand dynamics, respond immediately to t	200.00
DMDP231	The Angel™ Active		sound coming off the string	250.00
DMDP233	The Angel™ PZ		Magnetic sound hole pickup, active version	190.00
DMDP232	The Angel™ System		Standalone undersaddle pickup system	380.00
DMDP134	Elemental™		Combination of 2 systems : Angel Active + PZ & mixer	130.00
DMDP136	Super Natural Plus™		Suited to fingerpicking styles (small&mid-size guitars). Installs easily with foam-insulated mounting brackets	130.00
DMDP138	Virtual Acoustic™			130.00
DMACINST1	Installation pickup Sticks Musique : The Black Angel & The Angel PZ			85.00
DMACINST1	Installation pickup Sticks Musique : The Angel System			100.00

Modell und Preisänderungen vorbehalten-Nous nous réservons le droit de modifier prix et modèles sans préavis.

